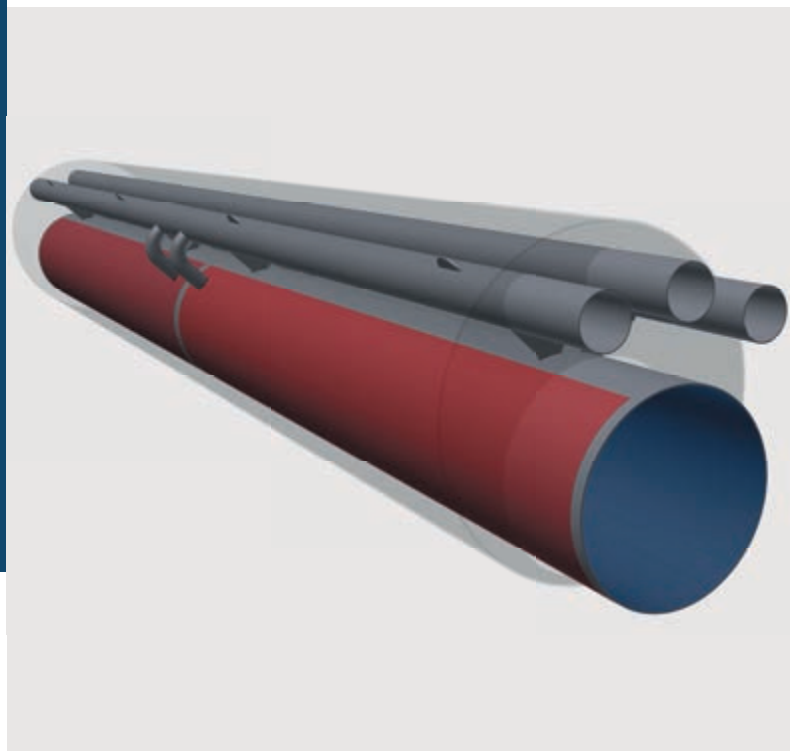


Pressure-pipe heat exchanger

KASAG Pressurepipe

The waste water flows through the main pipe and is used as a source of energy. Heat is extracted or discharged by means of a special double jacket around the entire circumference of the pipe. The main pipe is laid out according to the pressure rating in accordance with PED (EN13445 / AD-2000). The pressure pipe heat exchanger is suitable for energy recovery in new pressure pipes or as a replacement for existing pipes.



Technical data

Material	Stainless steel 1.4404, 1.4571
Jacket	insulated, PE mantle
Segment lengths	2–6 metres
Application	Suitable for heating and cooling
Area of use	Waste water, drinking water, liquids of all kinds containing solids
Installation places	Underground or laid in the open air

Heat exchanger performance (heating)

Main pipe diameter	
200 mm	1.6 kW/m
400 mm	3.2 kW/m
600 mm	4.8 kW/m
800 mm	6.3 kW/m

Assumptions

Temperature at source	13 °C
Inlet temperature	6 °C

